

iDoor Time Attendance Software

General Description

The *iDoor* Time Attendance software is designed and developed to further improve the usage of *iDoor* access control device.

Running on Windows GUI operating system, this software provides easy-to-use, easy-to-maintain capabilities to end-users.

Administration

The Administration features set allows our end-users to easily configure or administrate the *iDoor* access control device. It provides functionalities in the area of *iDoor* synchronizations, and user profiles administration.

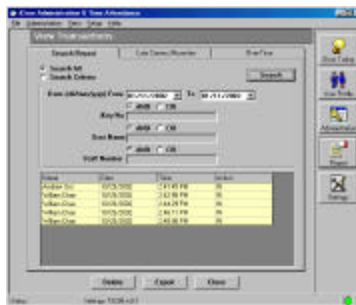


This module can also serve as a human resources system to our clients, whereby staff information can be stored and managed within the same software.



Time Attendance

Time attendance has become an important business application for monitoring of internal staff.



The *iDoor* Time Attendance provides real-time display of access transactions. User information is displayed in *iDoor* Today's screen.

Also, *iDoor* Time Attendance module captures each and every access transaction by the staff into a database. These will then be used for reporting in later stage.

Reports

iDoor Administration & Time Attendance software offers the following reports:

- Real-Time Access
- Daily Details
- Details by Date
- Details by Name
- Details by iKey S/N
- Details by Staff Number
- Details by Combinations
- Total Late Comer Report
- Late Comer by Date
- Normal Day Over-Time
- Public Holiday Over-Time
- Total Over-Time
- Over-Time by Date
- Over-Time by Name
- Over-Time by Staff Number
- and etc.

Specifications

iDoor Administration & Time Attendance Server

Operating System	Windows.....	95, 98, ME, NT, 2000, XP
CPU	Pentium III.....	450 MHz or above
Memory	SDRAM.....	64 Mbytes or above
Hard Disk Capacity	Free Storage.....	10 Mbytes or above
Drives	Floppy..... CD-ROM.....	3.5" 1.44 Mbytes 12x or above
Interface	TCP/IP..... Serial.....	10/100 BaseT (For Client) 9-pin RS-232 Serial Port

iDoor Client

Operating System	Windows.....	95, 98, ME, NT, 2000, XP
CPU	Pentium III.....	300 MHz or above
Memory	SDRAM.....	64 Mbytes or above
Hard Disk Capacity	Free Storage.....	3 Mbytes or above
Drives	Floppy..... CD-ROM.....	3.5" 1.44 Mbytes 12x or above
Interface	TCP/IP.....	10/100 BaseT (For Server)

iDoor Advantages

High Level Security

The *iDoor* & Time Attendance software runs on the secure TCP/IP network that provides *iDoor* access details and reports to its client interface program. Hence, server application can be placed in secured data center for authorized personnel only.

Cost Effective

iDoor Time Attendance software offers low and effective entry level price to small and medium corporations. Besides, Kast System & Solution Sdn Bhd is also committed to enhance the software with more improved and practical users' features in the future.

User Friendly

iDoor Time Attendance software offers an easy-to-use graphical user interface (GUI) on the widely available Windows operating system. This provides our clients with the highest comfort level in using and administering the software modules.

Distributed by:



**KAST SYSTEM & SOLUTION
SDN BHD (263845A)**

58-1, Jalan SS 14/2, Subang Jaya, 47500 Petaling Jaya,
Selangor D.E., Malaysia.
Tel: +603 5631 6618, 5633 4480, 5631 7012
Fax: +603 5631 6589
Email: sales@kss.com.my
URL: <http://www.kss.com.my>

Also Available From:

