

# *idoor*

## **Intelligent Door Access Device**

### **General Description**

There is a growing demand of access control device in today's market place. Small-medium corporations are often stopped by expensive investment in implementing access control devices in its premises.

With this in mind, *iDoor* is designed and developed to be an easy-to-use, easy-to-maintain, and most importantly cost effective product.



### **iDoor Design**

*iDoor* is an intelligent door access control device, which provides high level of security in personal identification and authentication capability.

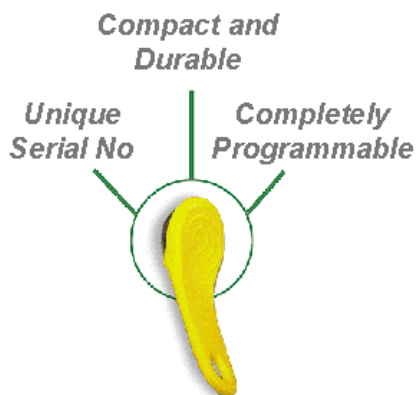
Embedded with a powerful multitasking micro-controller as its core, *iDoor* permits access to user via a handy and authorized iKey touch to the sophisticated iKey interface reader.

*iDoor* can easily be configured via the 12-keys numeric keypad, such as company name, office hours, door open duration, add/delete iKey, and etc.



### **iKey Design**

Each iKey houses a tiny computer chip that holds a unique, non-corruptible factory programmed serial number, which cannot be copied and there are no identical ones in the world. This silicon chip is protected by the ultimate durable material, stainless steel.



Also, iKey is not affected by extreme heat or cold and can handle the effects of almost any environment. You can even drop it, step on it, scratch it, or wear it swimming.



### **iDoor Features**

*iDoor* offers features as follows:

- Access by PIN, iKey or PIN + iKey
- Additional night time security
- Up to 100 iKeys or users
- 800 event logs cyclic buffer
- Events Data download
- Stand-alone or Network
- 32Kb Non-Volatile Memory
- Built-in Calendar till year 2050
- Highly accurate crystal clock
- Backlit 2 lines LCD Display
- Company Name on LCD Display
- API for integration to PC
- Permits access by phone
- Magnetic or electric strike lock compatibility
- ... and many more ...

### **OPTIONAL ACCESSORIES**



### **iDoor Standard Packaging**

*iDoor's* standard package comes with the following components:

- *iDoor* Access Controller
- 3 units of iKey
- Installation Manual

## Specifications

### iDoor

Power Requirements	Input Voltage.....	+7 Vdc to +12 Vdc
	Current Consumption..... (Exclusive of door lock)	40 mA (Idle) 200 mA (Maximum)
Environmental	Operating Temperature.....	0°C to 70°C
	Humidity.....	0% to 95% relative non-condensing
Physical	Dimension.....	150 x 105 x 40 mm
	Weight.....	300g
Capacity	Total Data Storage.....	32 Kbytes
	User Records.....	100 iKeys or users
	Traffic Records.....	800 Event Logs Cyclic Buffer
Performance	Reader Response Time.....	100 mSec (Maximum)
Reliability	MTBF.....	1,000,000 iKey Touches, or > 13 years @ 200 Touches/day

### iKey

Physical	Diameter.....	16 mm
	Thickness.....	6 mm
Environmental	Thermal Operating Range.....	-40°C to 85°C
Reliability	Data Retention.....	> 10 years

## iDoor Advantages

### High Level Security

By utilizing the advanced iKey technology, *iDoor* offers the highest level of security and authentication mechanism to identify authorized personnel. With iKey, you will be identified by its serial number, in which you are the only iKey owner in the world with this serial number.

### Cost Effective

*iDoor* offers low and effective entry level price to small and medium corporations. Besides, Future Dynasty Sdn Bhd is also committed to enhance the *iDoor* device with more improved and practical users' features in the future.

### Investment Protection

*iDoor's* product architecture offers capability to grow with the company by upgrade and migration into networking environment, enabling future enhancement and integration to other corporate software elements, such as human resource and time attendance systems.

### Distributed by:

**Future Dynasty Sdn Bhd (621631-T)**  
 No.79, 1<sup>st</sup> Floor, Jalan USJ 21/10, UEP Subang Jaya, 47630  
 Selangor D.E., Malaysia.  
 Tel: +603 8025 1388 Fax: +603 8025 1288  
 Email: sales@fd.com.my  
 URL: http://www.fd.com.my

### Also Available From:

